

A health snapshot of our region

Total resident population^[e]

1,497,186

Norfolk Island

1,748

Lord Howe Island

382

Life expectancy^[f]

Life expectancy of residents in CESPHN region is

83.8

YEARS

compared to the national average of 82.4 years

Population Projection^[e]



	2033	% INCREASE
TOTAL	1,951,132	24%
0-14	315,372	31%
15-64	1,305,432	16%
65+	330,328	58%

Aboriginal and/or Torres Strait Islander^[e]

Total number of residents in CESPHN who are of Aboriginal and/or Torres Strait Islander descent:

13,479

equaling 0.84 % of the total population of CESPHN -% of total Australian population = 2.8%

Highest proportion of Aboriginal and/or Torres Strait Islander people reside in Sydney Inner City and Eastern Suburbs- South areas

Language^[g]

- 1 Mandarin
- 2 Cantonese
- 3 Arabic
- 4 Greek
- 5 Italian

40% of our residents were born overseas

42% speak a language other than English at home

6% do not speak English well or at all

Received **50% of NSW HIV notifications 2017^[j]**

Non-resident population^[i]

APPROXIMATELY

500,000

people come to CESPHN each day to work, visit or study

No. of standard GP consultations in 2016-2017^[h]

7,568,288

Same-sex couples

CESPHN has the highest number of same sex couples in NSW^[k]

[e] BS Census of Population and Housing 2016 Aboriginal & Torres Strait Island Population

[f] AIHW Nov 2017 Life expectancy and potentially avoidable deaths in 2013-2015

[g] ABS Census of Population and Housing 2016 Language spoken at home by LGA 2016

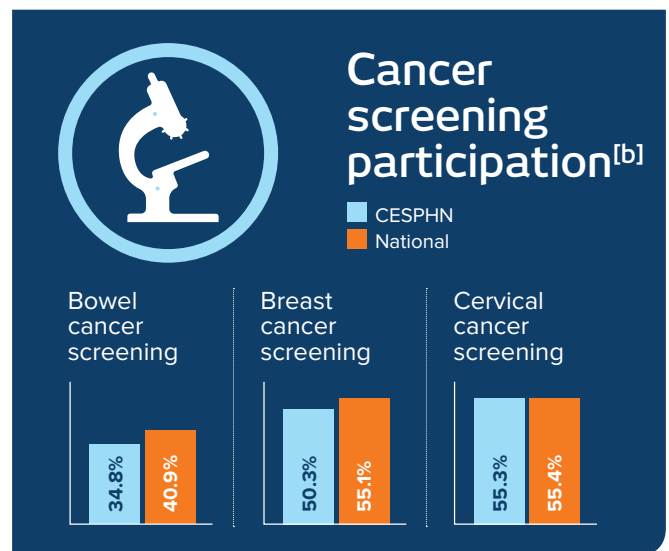
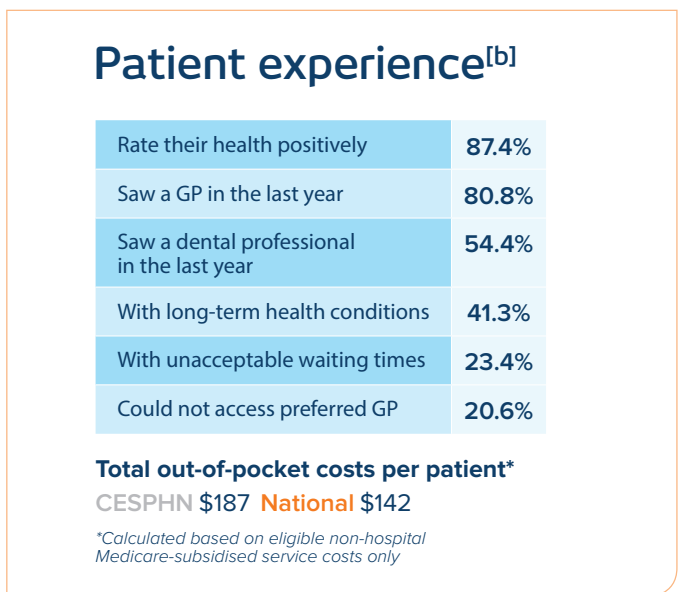
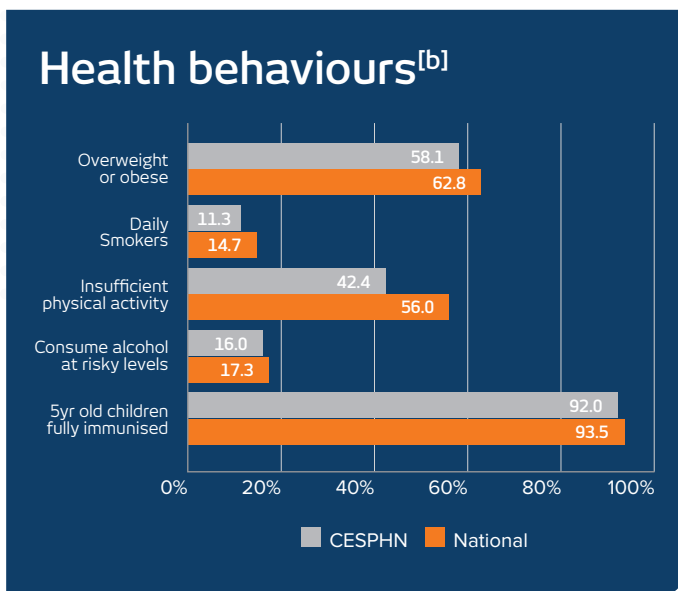
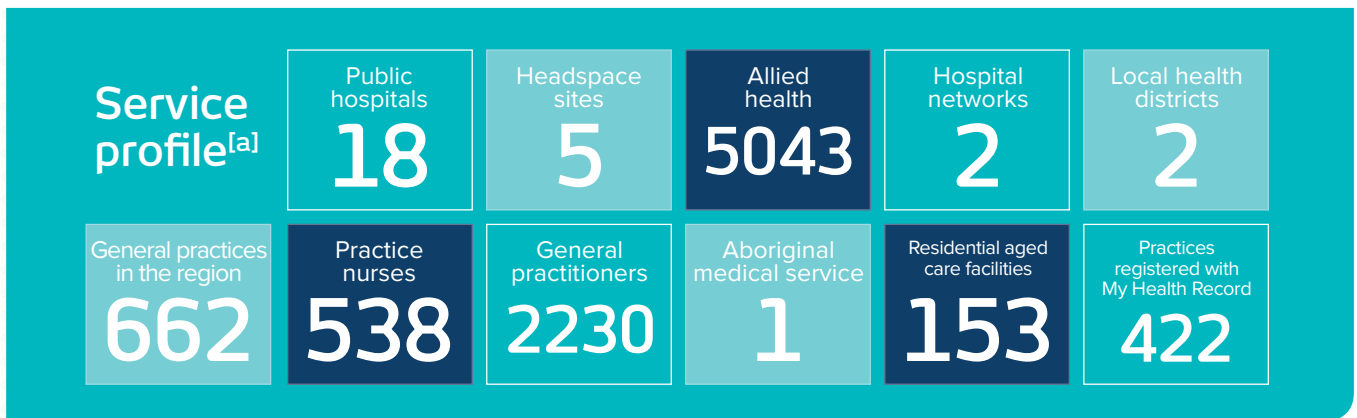
[h] Medicare Benefits Schedule Data. MBS data by PHN - MBS Item and Reporting Group 2012-13 to 2016-17 <[http://www.health.gov.au/internet/main/publishing.nsf/Content/A1F08249E056C796CA257FD400281DBF/\\$File/MBS%20Items%20and%20Groups%20by%20PHN%201213-1617%207NOV17%20A.xlsx](http://www.health.gov.au/internet/main/publishing.nsf/Content/A1F08249E056C796CA257FD400281DBF/$File/MBS%20Items%20and%20Groups%20by%20PHN%201213-1617%207NOV17%20A.xlsx)>

[i] Journey to Work in Australia 2018, Australian Bureau of Statistics, accessed 2 October 2018, <<http://www.abs.gov.au/ausstats/abs@nsf/Lookup/by%20Subject/2071.0.55.001%202016%20Main%20Features%20Feature%20Article:%20Journey%20to%20Work%20in%20Australia%40>>.

[j] NSW Ministry of Health. NSW HIV Strategy 2016 - 2020: Quarter 4 2018 Data Report. Available from: <<https://www.health.nsw.gov.au/endinghiv/Publications/q4-2017-and-annual-hiv-data-report.pdf>>

[k] ABS Census of Population and Housing 2016 Same-sex couples in Australia, 2016, accessed 6 December 2018, <<http://www.abs.gov.au/ausstats/abs@nsf/Lookup/by%20Subject/2071.0%202016%20Main%20Features%20Same-Sex%20Couples%85>>

A health snapshot of our region



[a] My Hospitals n.d., Australian Institute of Health and Welfare, accessed 3 October 2018 <<https://www.myhospitals.gov.au/browse-hospitals/nsw/sydney/sydney>>. Needs Assessment 2017, Central and Eastern Sydney PHN

[b] My Healthy Communities n.d., Australian Institute of Health and Welfare, accessed 2 October 2018, <<https://www.myhealthycommunities.gov.au/primary-health-network/phn10/>>.

[c] Social Health Australia of Australia: Primary Health Networks n.d., Public Health Information Development Unit, Torrens University Australia, accessed 2 October 2018, <http://www.phidu.torrens.edu.au/current/data/sha-aust/phn_pha_parts/phidu_data_phn_pha_parts_aust.xlsx>.

[d] ABS 2016 Census of population and Housing; Estimating homelessness 2016 Table 5.1 Homeless Operational Groups and other Marginal Housing by place of enumeration, Statistical Level 3.