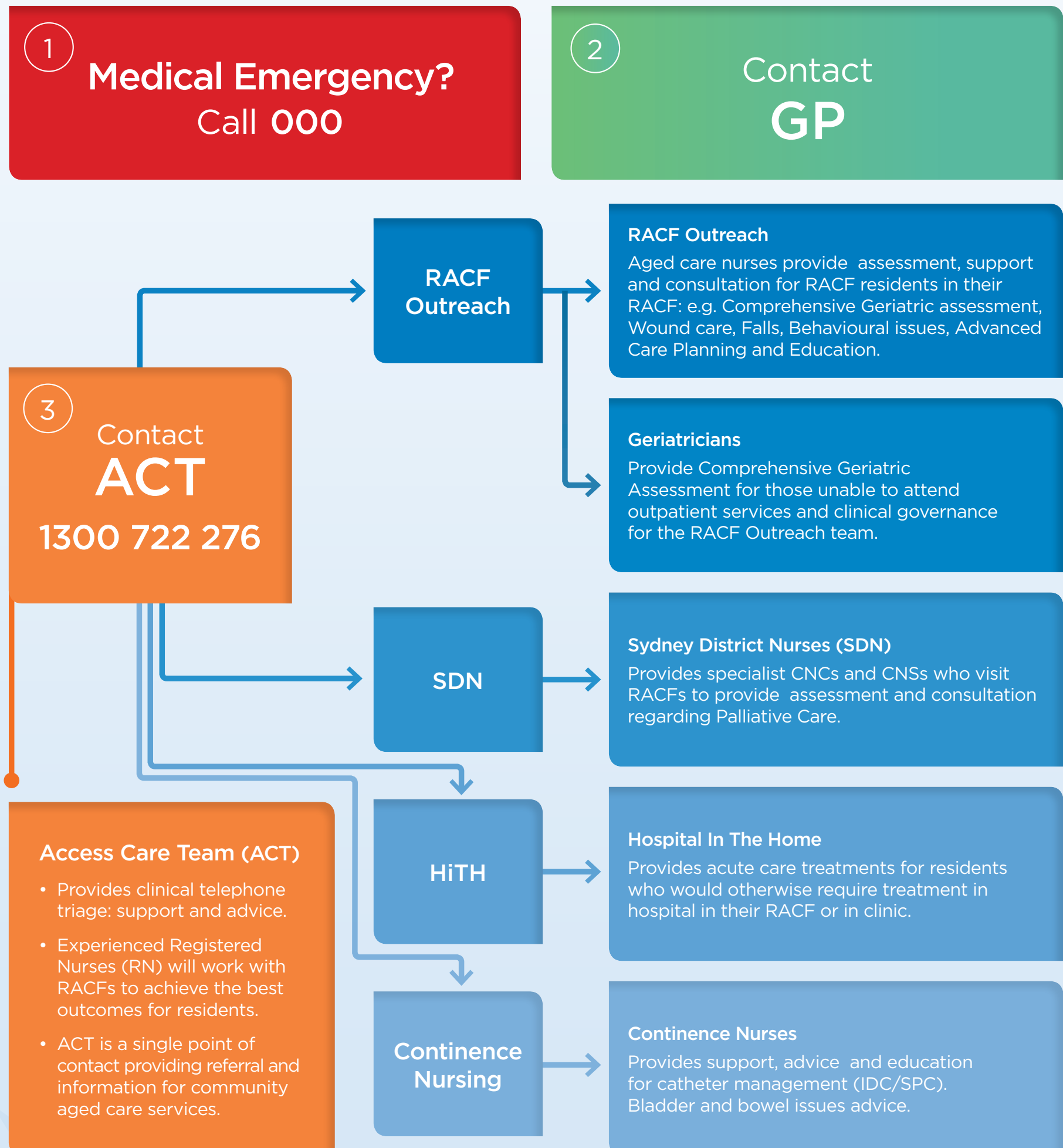


RACF staff or GP:

Have you concerns about the condition of your resident?



Access Care Team (ACT)

Phone: 1300 722 276	Fax: 9767 7026	Email: SLHD-ACTCallCentre@health.nsw.gov.au
----------------------------	-----------------------	----------------------------------------------------

8am – 8pm, 7 days a week (Including public holidays)

For more information visit us at (or scan the barcode for access):
www.slhd.nsw.gov.au/acrs/findaservice.html

